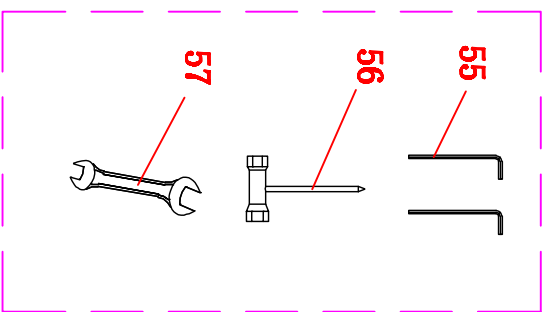
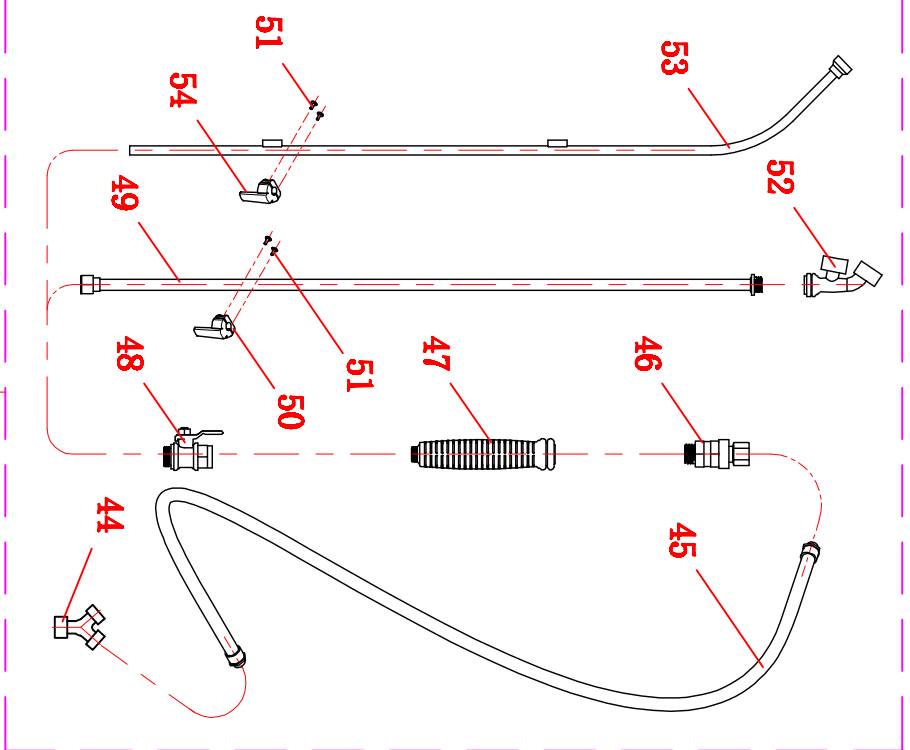
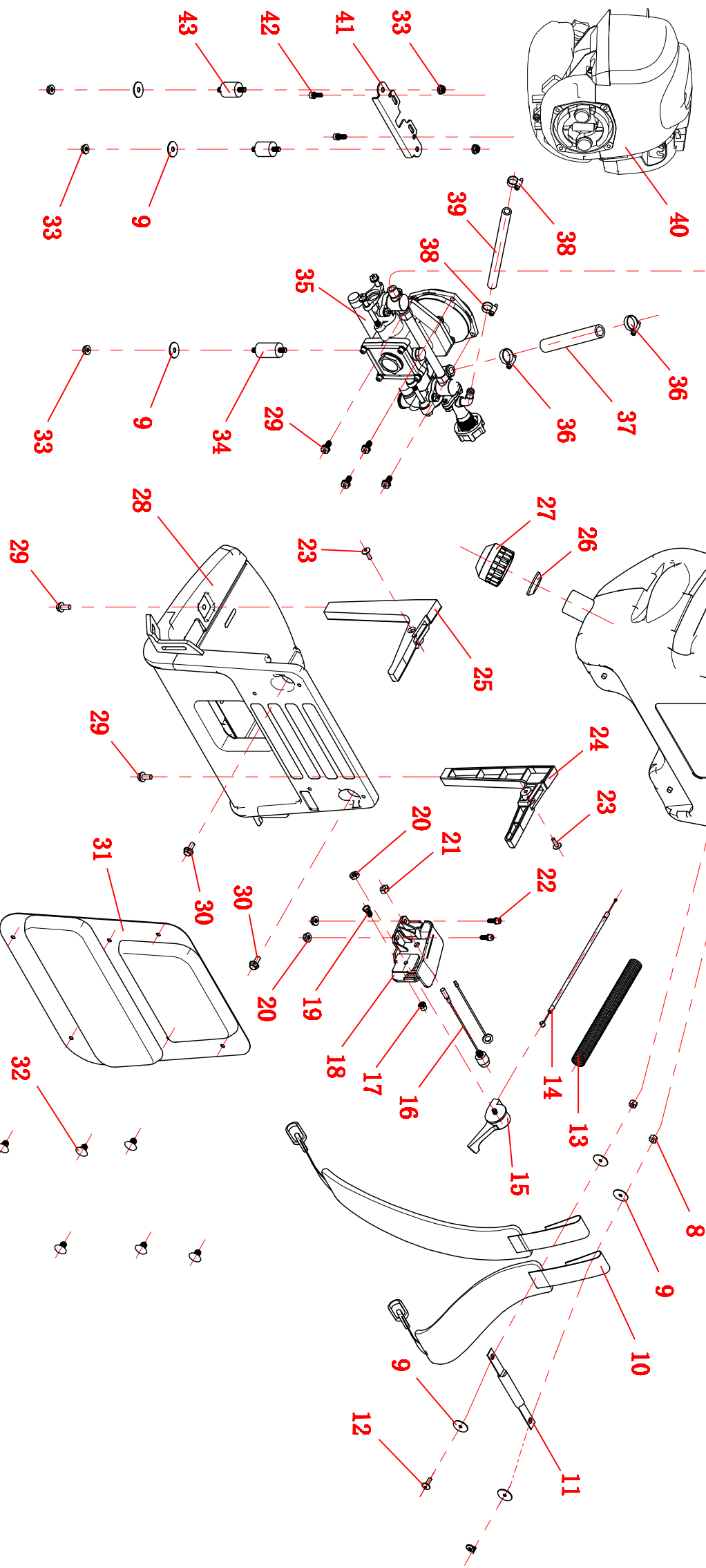


# 型号:



42	inside hexagon bolt	M6*12	2	41	gasoline engine base		1
43	rubber support		2	40	gasoline engine		1
44	Y joint		1	39	overflow pipe		1
45	high pressure delivery pipe	1.2m	1	38	clamp	9-13	2
	high pressure delivery pipe	1.8m	1	37	intake pipe		1
46	SS connection nod	13.8-18	2	36	clamp	13-19	2
47	PLASTIC HANDLE		2	35	plunger pump		1
48	BALL VALVE		2	34	rubber support		1
49	strict shaft		2	33	hex flange nut	M6	5
50	gun holder	ø9.6	2	32	back supporter nut		6
51	screw	M3*10	8	31	back supporter		1
52	F sprayer nod		2	30	cross outer hexagon bolt	M6*16	2
53	4 nozzle		2	29	cross outer hexagon bolt	M6*20	6
54	gun holder	ø8	2	28	base		1
55	allen wrench	4	2	27	leak cap		1
56	spark plug sleeve	16-19	1	26	leak cap rubber seal		1
57	srench	8-10	1	25	right supporter		1
59				24	left supporter		1
60				23	cross round head bolt	M6*20	2



NO.	Name	Specifications	Quantity
1	tank cap		1
2	tank breath one way valve		1
3	tank rubber seal		1
4	tank double filter (small)		1
5	tank double filter (big)		1
6	Small filter		1
7	tank	M6	1
8	heightening nut	M6	2
9	gasket	ø6.5*ø22*1	7
10	belt (with gun holder)		1
11	carry bolt	M6*15	1
12	cross round head bolt		2
13	cable wire protector		1
14	accelerator cable wire		1
15	accelerator handle		1
16	switch		1
17	cover shape nut	M6	1
18	switch base		1
19	outer hexagon bolt	M6*12	1
20	hex flange nut	M6	3
21	hexagon nut	M6	1
22	inside hexagon bolt	M6*20	2
23	cross round head bolt	M6*20	2
24	left supporter		1
25	right supporter		1
26	leak cap rubber seal		1
27	leak cap		1
28	base		1
29	cross outer hexagon bolt	M6*20	6
30	cross outer hexagon bolt	M6*16	2
31	back supporter		1
32	back supporter nut		6
33	hex flange nut	M6	5
34	rubber support		1
35	plunger pump		1
36	clamp	13-19	2
37	intake pipe		1
38	clamp	9-13	2
39	overflow pipe		1
40	gasoline engine		1
41	gasoline engine base		1