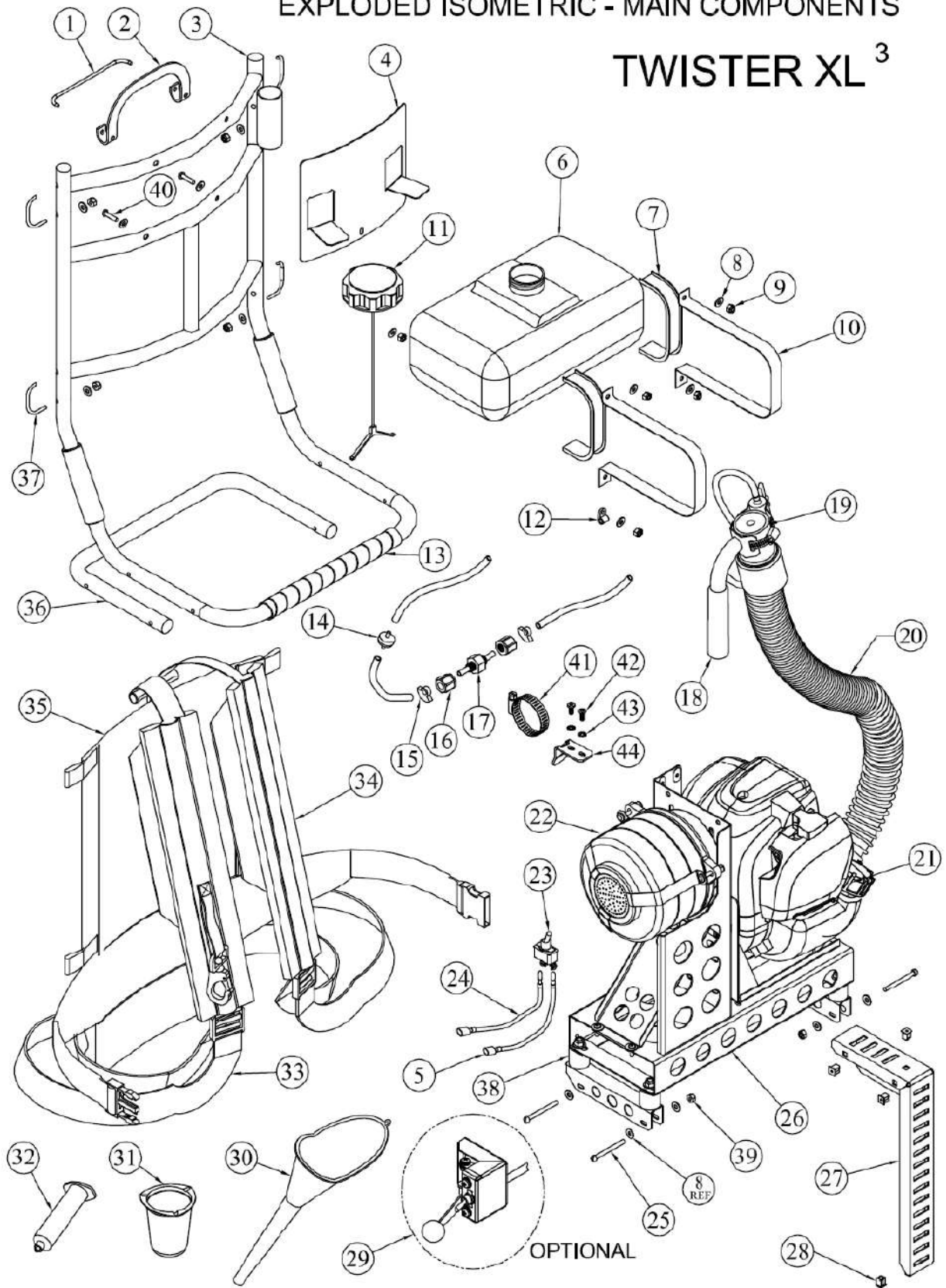


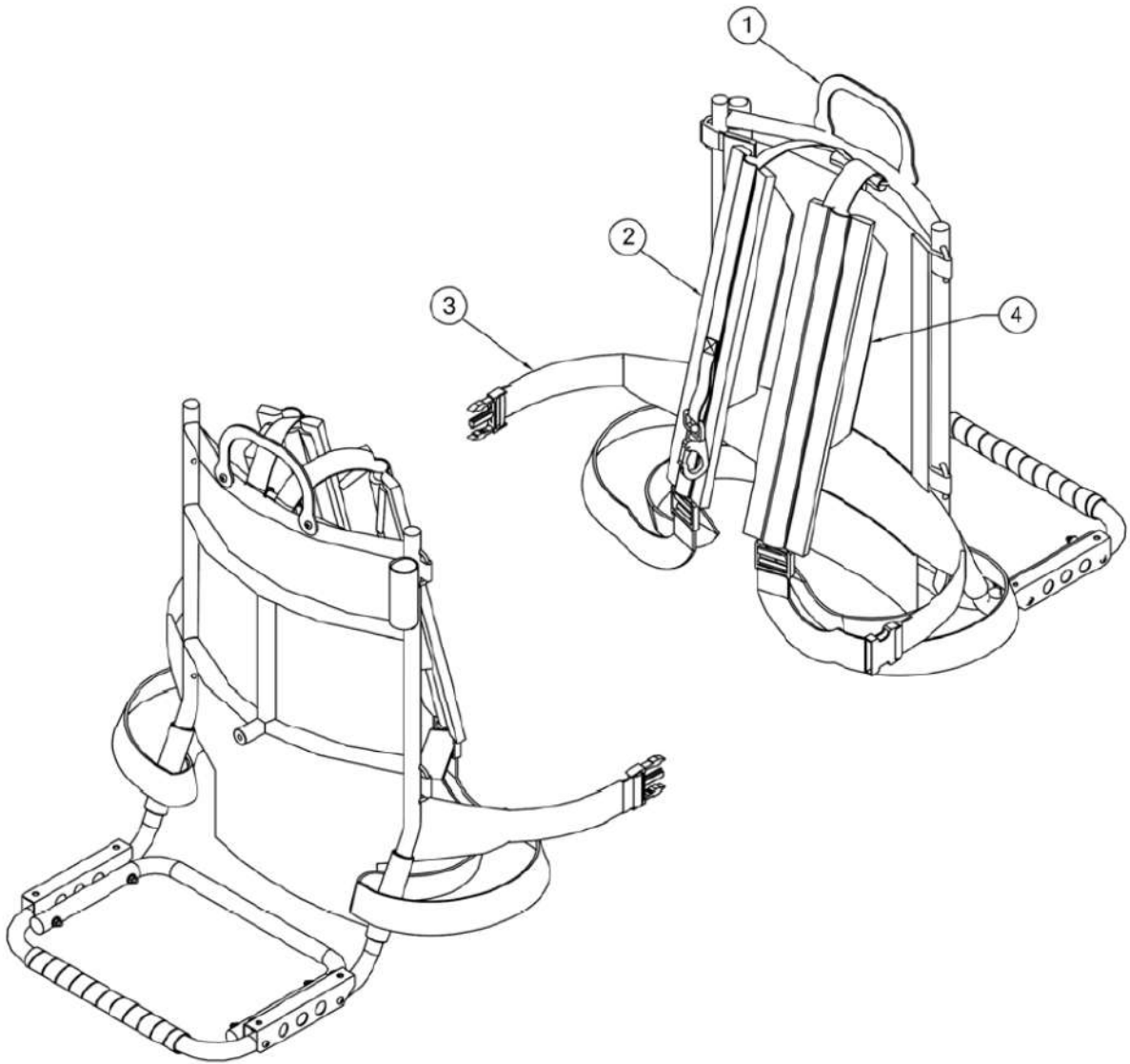
EXPLODED ISOMETRIC - MAIN COMPONENTS

TWISTER XL³



TWISTER XL 3 EXPLODED VIEW DIAGRAM

ITEM	P/N	QTY.	DESCRIPTION
1	39602	1	BAR, STRAP
2	39728	1	HANDLE, TWISTER XL 3
3	39751	1	FRAME AY, TWISTER 3
4	39756	1	PLATE, SUPPORT, TWISTER
5	39657-4	1	WIRE, KILL SWITCH (HONDA)
6	39791-3 39755-3	1	TANK, FORMULATION, LOW PROFILE
7	39809-4	2	INSULATOR, TANK STRAP
8	120391	15	WASHER, FLAT, #10, REG.
9	9419454	2	NUT, NYLOCK, 1/4-20
10	39758	2	STRAP, MOUNTING, TANK
11	39791-1 39755-1	1	CAP, TANK (VENTED)
12	86690	1	CLAMP TUBE
13	39705-1	1	WRAP, 1.0 O.D., 11.00" LONG
14	58316	1	FILTER, 3/16x75 MICRO
15	21158	2	CLAMP, 11/32, PLASTIC
16	62582-1	2	NUT, .250, PLST GRIP
17	64934-19	1	ORIFICE AY.
18	62200	1	HANDLE AY.
19	62313	1	NOZZLE AY.
20	39672	1	HOSE AY.
21	39616 39656-1	1	ENGINE AY. (HONDA) ENGINE AY. (TANAKA)
22	39651	1	BLOWER AY.
23	62369	1	SWITCH, ON/OFF
24	39657	2	WIRE AY, KILL SWITCH
25	132080	4	SCREW, 10-24x2, FLSL
26	39674	1	CHANNEL AY., TWISTER XL
27	39723	1	GUARD AY., BELT
28	85363	4	EXPANSION NUT
29	39699	1	CONTROL AY., THROTTLE, TWISTER XL
30	39725	1	FUNNEL, PLASTIC
31	39596	1	BEAKER, PLASTIC, 100ML
32	62332	1	VISCOSOMETER
33	39765-1	1	STRAP AY., HARNESS, W/HOOK
34	39765	1	STRAP AY., HARNESS
35	39759	1	HARNESS/PAD AY.
36	39692	1	TUBE, STABILIZER
37	39754	4	ROD, RETAINING, HARNESS
38	63148	4	MOUNT, SHOCK (1/4-20)
39	190254	14	NUT, 10-24 LOCK, HEX
40	159967	2	SCREW, 10-24X1-1/2
41	20054-3	1	CLAMP, WORM, 2.50 DIA.
42	159920	2	SCREW, 10-24 X 1/2 PH.
43	138479	2	WASHER, LOCK, #10, EXTO
44	39771	1	BRACKET, HOSE/BLOWER MOUNTING



STRAPS FOR TWISTER XL 3 MODEL #3950

ITEM	QTY	P/N	DESCRIPTION
1	1	39728	HANDLE, TWISTER XL
2	1	39765-1	SHOULDER STRAP W/HOOK
3	1	39759	HARNES/PAD AY.
4	1	39765	SHOULDER STRAP W/O HOOK

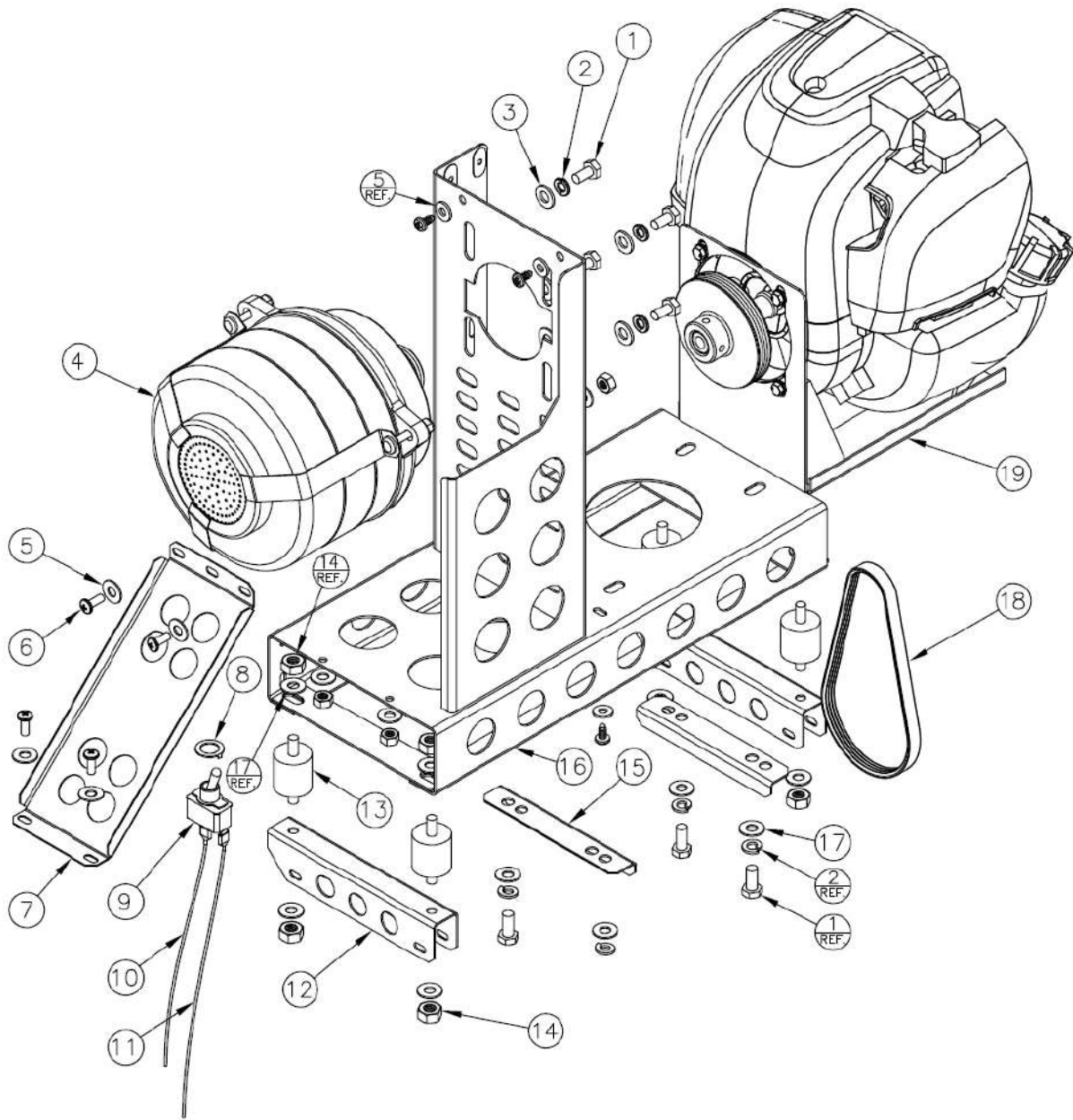
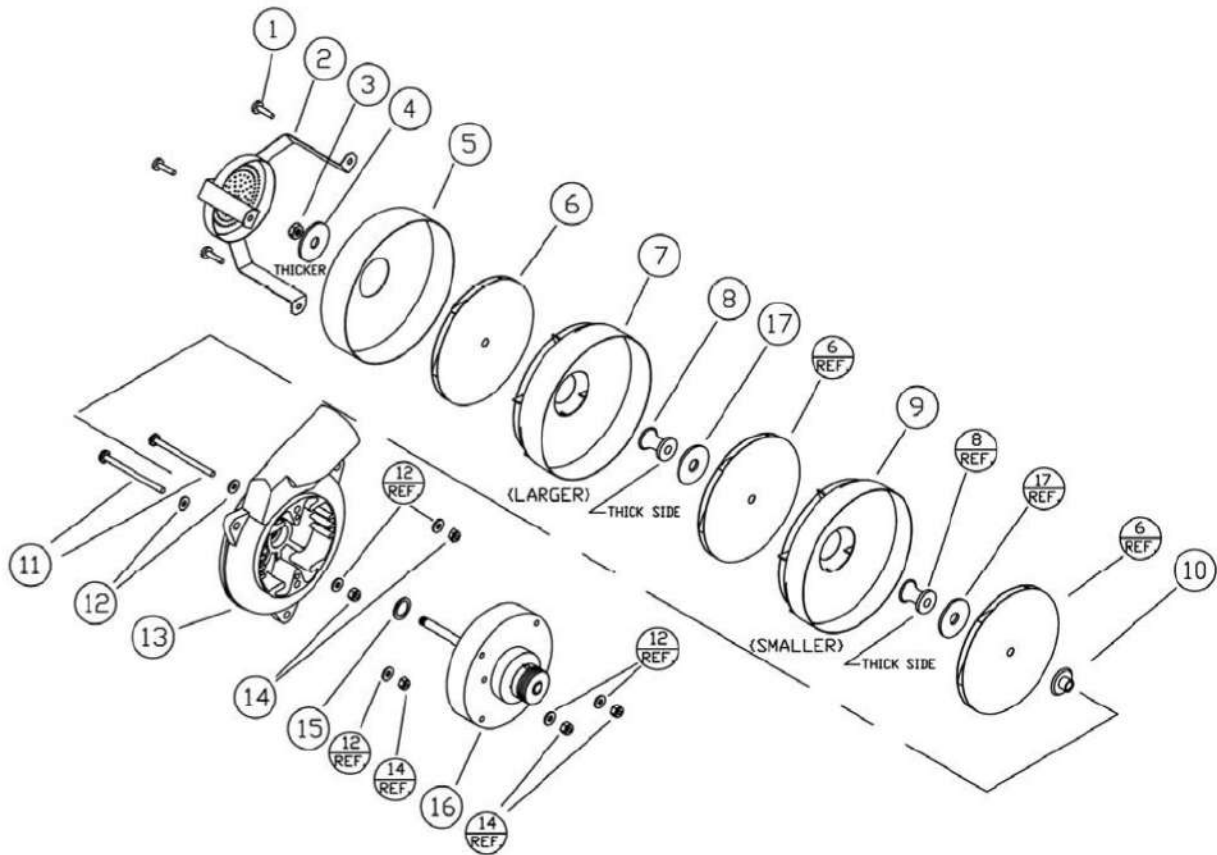


PLATE AY., ENGINE/BLOWER (P/N: 39668)

PLATE AY., ENGINE/BLOWER (P/N: 39668)

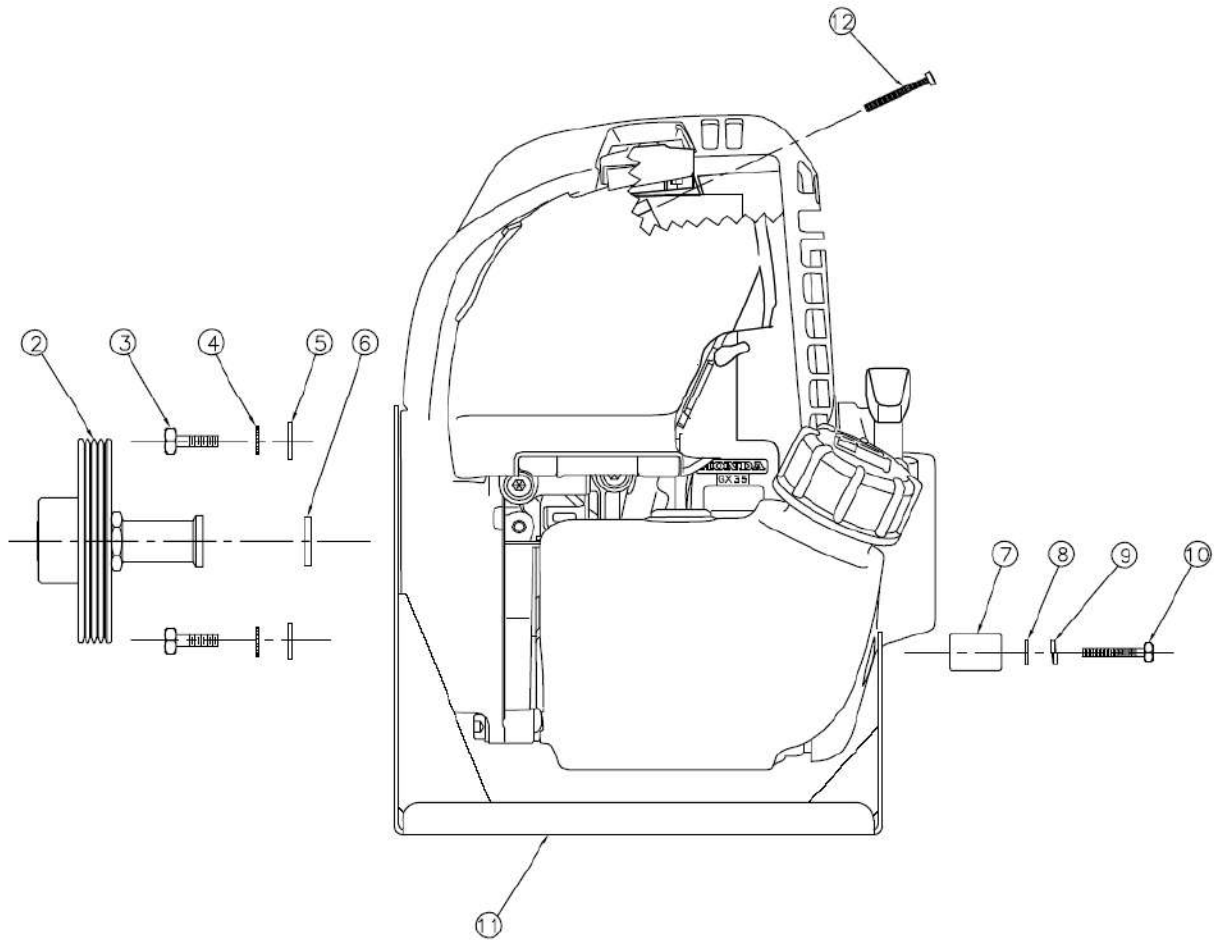
ITEM	QTY	P/N	DESCRIPTION
1	8	121887	BOLT HEX 1/4-20 X 3/4
2	8	120380	WASHER, LOCK 1/4 SPLIT
3	18	120392	WASHER, FLAT, 1/4 REG.
4	1	39651	BLOWER AY., TWISTER
5	8	120391	WASHER, FLAT, #10, REG.
6	4	157684	SCREW, 10-24 X 1/2, TRCR
7	1	63921	BRACKET, SUPPORT
8	1	30024	RING, LOCKING
9	1	62369	SWITCH, ON/OFF SLIDE TERMINAL
10	1	39657-2	WIRE AY., KILL SWITCH
11	1	39657-4	WIRE AY., KILL SWITCH (HONDA)
12	2	39596	BRACKET, ISOLATORS SUPPORT
13	4	63148	MOUNT, SHOCK (1/4-20)
14	8	9419454	NUT, NYLOCK 1/4-20
15	2	39711	STIFFENER, ENGINE MOUNTING
16	1	39674	CHANNEL AY., TWISTER XL
17	18	120392	WASHER, FLAT, 1/4, REG.
18	1	39504	BELT, POLY-V (16.0")
19	1	39616 39656-1	ENGINE AY., HONDA GX-35 ENGINE AY., TANAKA PF-4000



CURTIS DYNA-FOG® Twister™ XL 3

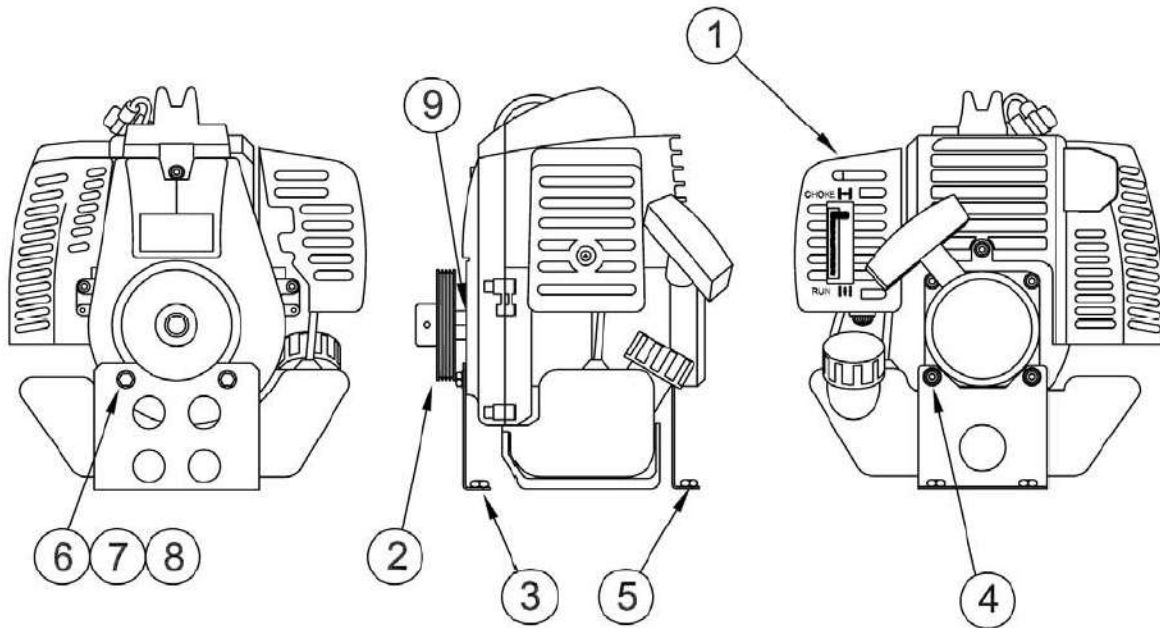
BLOWER ASSEMBLY P/N: 39651

ITEM	QTY.	PART NUMBER	ITEM DESCRIPTION
1	3	A273746	SCREW, 10-24X3/4 TRCR
2	1	B39663	FILTER ASSEMBLY
3	1	A39651-11	NUT AMETEK NO. 7491
4	1	A39651-13	WASHER
5	1	B39651-9	FAN SHELL
6	3	B39651-5	FAN ROTATING
7	1	B39651-8	FAN STATIONARY
8	2	B39651-6	SPACER
9	1	B39651-7	FAN STATIONARY
10	1	A39651-4	SPACER
11	2	A159982	SCREW, 10-24X2.25 PAN H.
12	7	A120391	WASHER, FLAT, #10, REG.
13	1	B39651-31	BRACKET, FAN END, MACHINED
14	5	A190254	NUT, 10-24 LOCK, HEX
15	1	10100-18	WASHER, NEOPRENE
16	1	C39698	SHAFT/BEARING HOUSING AY.
17	2	AC39651-14	WASHER, 1.5" OD



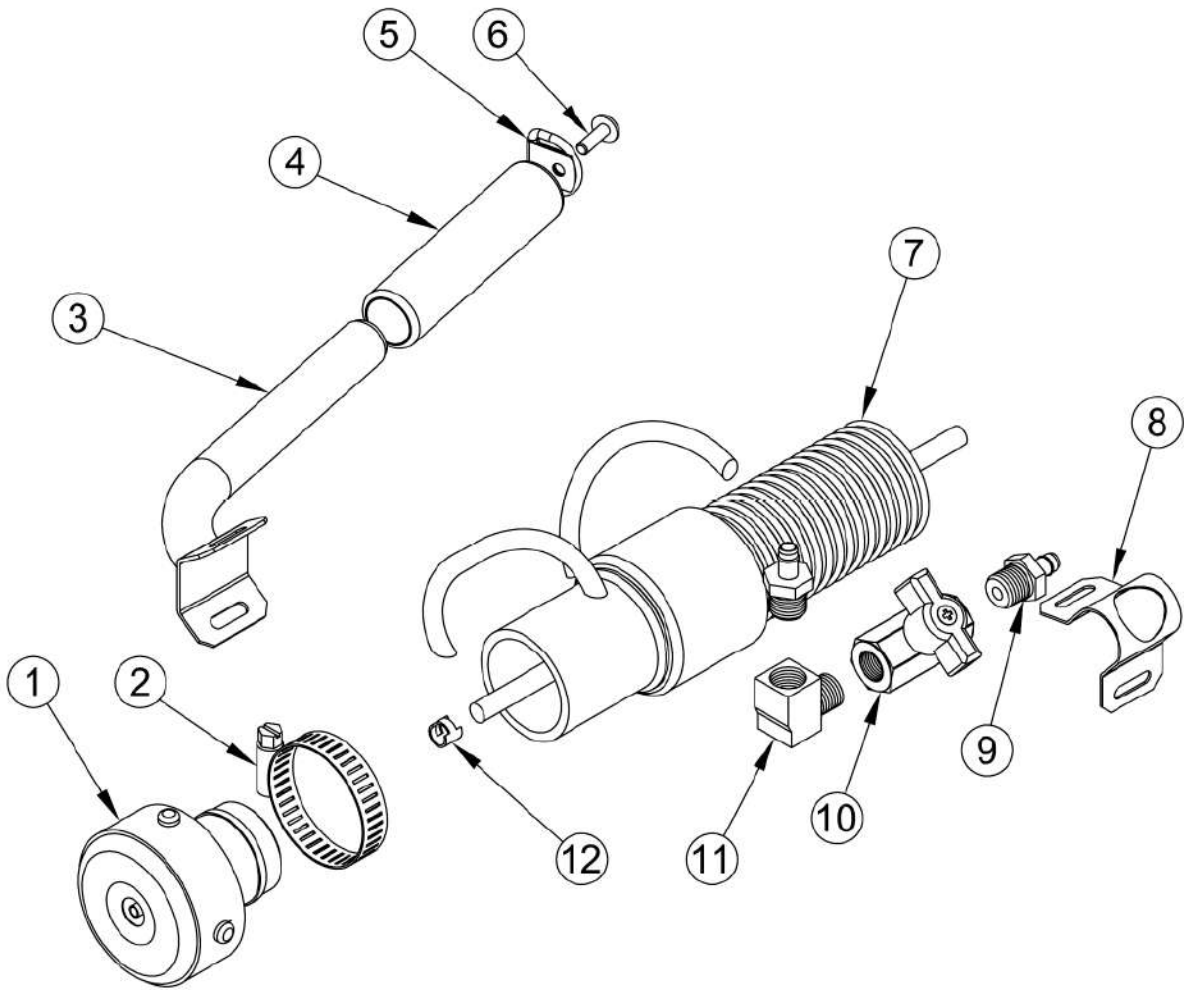
CURTIS DYNA-FOG® Twister™ XL 3
ENGINE ASSEMBLY, HONDA GX-35 (P/N: 39616)

ITEM	QTY.	PART NUMBER	ITEM DESCRIPTION
1	1	39597	ENGINE, 35CC, GX-35 HONDA
2	1	39614	PULLEY AY., HONDA GX-35
3	4	39720	BOLT, 6 MM., - 1.00 MM. HEX
4	4	121753	WASHER, LOCK, 1/4, EXTO
5	4	120392	WASHER, FLAT, 1/4, REG.
6	1	39597-1	WASHER, PULLEY AY., GX-35
7	2	39612	SPACER, ENGINE, HONDA GX-35
8	2	120391	WASHER, FLAT, #10, REGULAR
9	2	120217	WASHER, LOCK, #10, SPLIT
10	2	39615	BOLT, M5-10 MM., HEX
11	1	39611	ENGINE CRADLE WELDED AY.
12	1	65229-2	SCREW, 4-40 X 2.5, PHCR. SST.



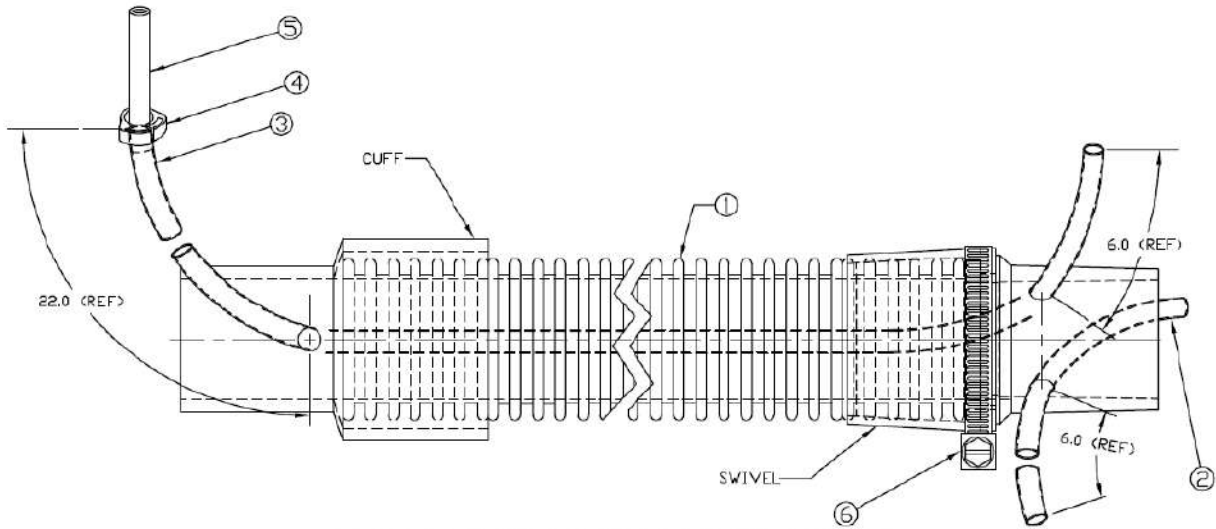
CURTIS DYNA-FOG® Twister™ XL 3
TANAKA PF-4000 ENGINE ASSEMBLY P/N 39656-1

ITEM	QTY.	PART NUMBER	ITEM DESCRIPTION
1	1	39656	ENGINE, 40 CC, TANAKA
2	1	39712	PULLEY/SHAFT ADAPTER AY
3	1	39658	BRACKET, L.H.
4	12	120391	FLAT WASHER, #10
5	11	39659	BRACKET, R.H.
6	2	39720	BOLT 6 MM – 1 MM
7	2	120392	FLAT WASHER, 1/4
8	2	121753	LOCK WASHER, 1/4
9	1	39710	WASHER, LOCK, SPLIT, 10 MM



REMOTE NOZZLE ASSEMBLY

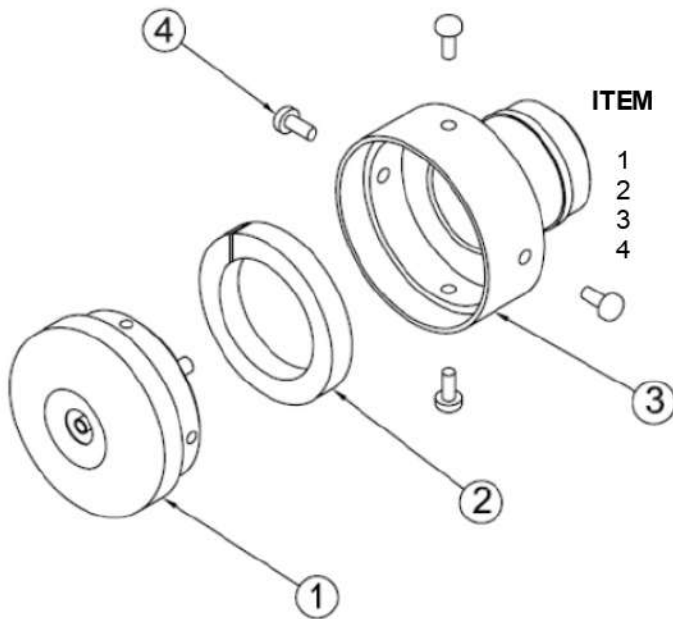
ITEM	QTY.	PART NUMBER	ITEM DESCRIPTION
1	1	39726	NOZZLE/ADAPTER ASSEMBLY
2	1	20054-2	CLAMP, 1.5 DIA
3	1	62200	HANDLE
4	1	59962-1	FOAM GRIP
5	1	11719	D-RING
6	1	449623	SCREW 10-24 X 1/2
7	1	39672	HOSE ASSEMBLY
8	1	39703-1	VALVE BRACKET, S.S.
9	2	39767	FITTING, BRASS, STRAIGHT, 1/4, MPT
10	1	22273	VALVE
11	1	ASC-35	ELBOW, BRASS, 1/4 MP - 1/4 FP
12	1	80296-3	CLAMP, GRAY



HOSE ASSEMBLY P/N 39672

ITEM	QTY.	PART NUMBER	ITEM DESCRIPTION
1	1	39732-51	HOSE AY, ORANGE
2	1	80447-8	TUBING, VINYL, .312 GRES.
3	1	80447-48	TUBING, VINYL, .312 GRES.
4	1	21158	CLAMP, 3/8, PLASTIC
5	1	62584-29	TUBING, 1/4 OD., POLY.
6	1	20054-8	CLAMP, HOSE, WORM DRIVE

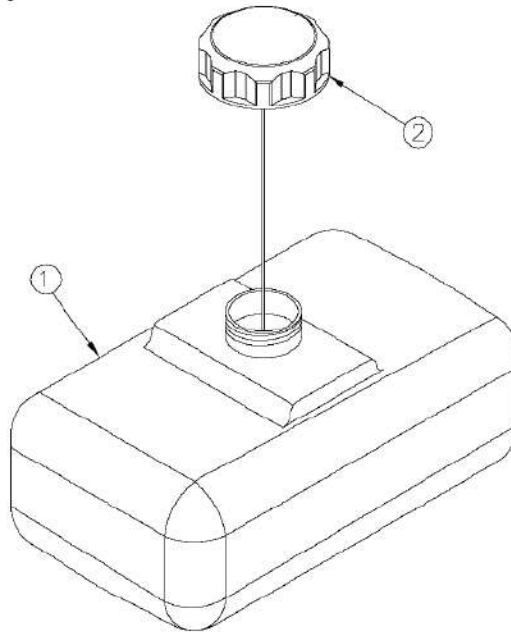
NOZZLE/ADAPTOR AY P/N: 39726



ITEM	QTY.	PART NUMBER	ITEM DESCRIPTION
1	1	62313	NOZZLE ASSEMBLY
2	1	62495	GASKET, .31 THK.
3	1	63503-29	ADAPTOR
4	1	62163	8-32 X .375 TYPE F STAPPING SCREW

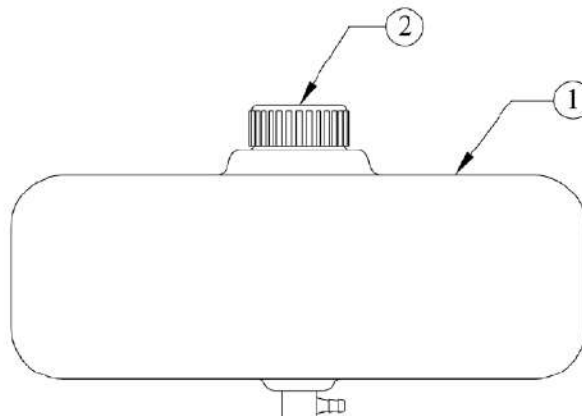
NOTE:

Your Twister XL 3 unit will use either P/N: 39791 or P/N: 39755 formulation tank. You can identify which tank you have by inspecting the formulation cap. If the cap has an outside diameter of 3.0", your Twister XL 3 unit came with P/N: 39791 formulation tank.



FORMULATION TANK AY (P/N: 39791)

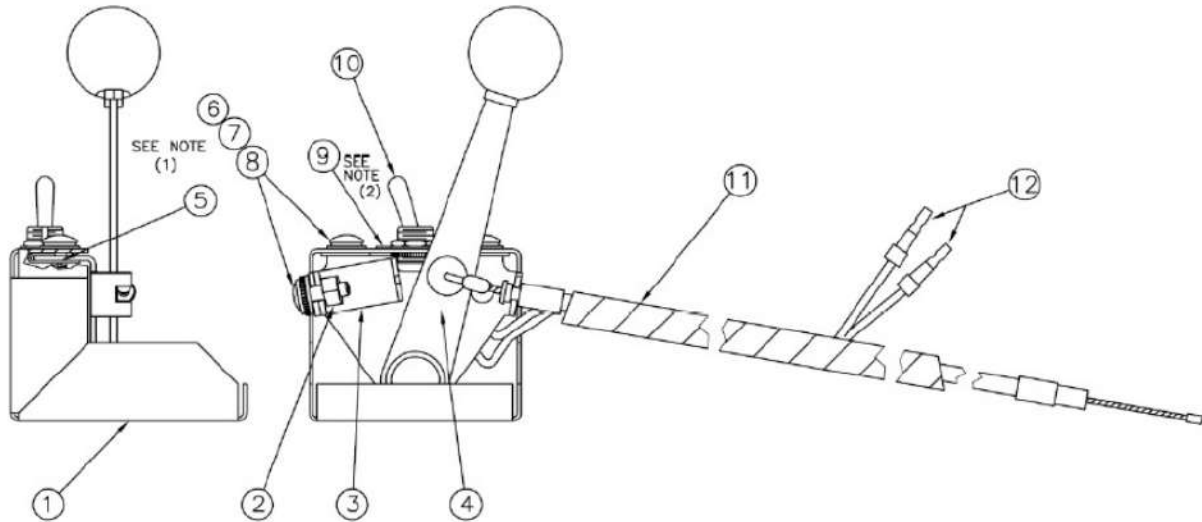
ITEM	QTY	P/N	DESCRIPTION
1	1	39791-3	TANK, 1 GALLON
2	1	39791-1	TANK CAP (VENTED)



FORMULATION TANK AY (P/N: 39755)

ITEM	QTY	P/N	DESCRIPTION
1	1	39755-3	TANK, 1 GALLON
2	1	39755-1	TANK CAP (VENTED)

OPTIONAL



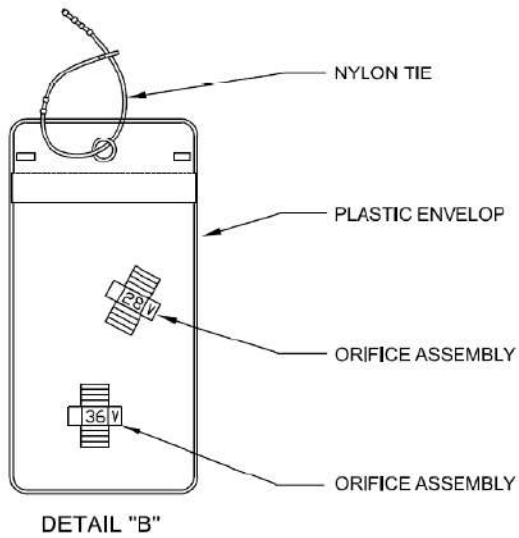
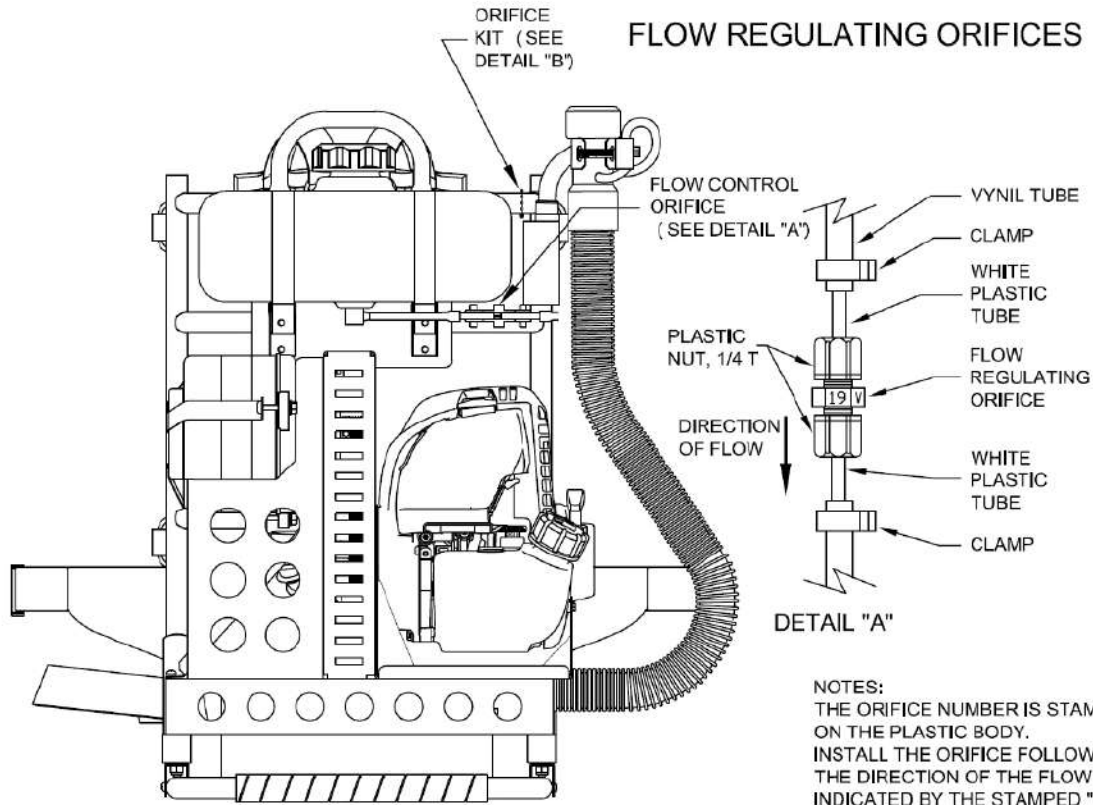
NOTES:

1. Switch with slot in the direction shown.
2. Item (6) does not show ON/OFF.

CONTROL ASSEMBLY, THROTTLE, TWISTER XL 3 P/N: 39699

ITEM	QTY	P/N	DESCRIPTION
1	1	39680	BRACKET, THROTTLE CONTROL
2	1	120361	NUT, #10-24
3	1	39729	STOP
4	1	397679	CONTROL, THROTTLE, TWISTER XL
5	2	58707	NUT, #10-24 J-TYPE
6	3	157684	SCREW, 10-24 X 1/2, TRCR
7	3	120391	WASHER, FLAT, #10 REG.
8	3	138479	WASHER, LOCK, #10 EXT.
9	1	62325	INDICATOR PLATE
10	1	62369	SWITCH, ON/OFF SL. TER.
11	6"	63414-11	HARNESS WRAP
12	2	39657	WIRE ASSEMBLY, KILL SWITCH

FLOW REGULATING ORIFICES



DESCRIPTION	PART NUMBER
NYLON TIE	22321-2
PLASTIC ENVELOP	22321-1
ORIFICE ASSEMBLY # 19	64934-19
ORIFICE ASSEMBLY # 28	64934-28
ORIFICE ASSEMBLY # 36	64934-36
VYNIL TUBE	80447-44
CLAMP, PLASTIC	21158
WHITE PLASTIC TUBE	62584-29
PLASTIC NUT, 1/4 T	62582-1

THE COMPONENTS SHOWN IN DETAIL "B" ARE INCLUDED IN THE KIT P/N 39704.

THE TWISTER XL IS SHIPPED WITH THE ORIFICE #19 INSTALLED.

DYNA-FOG[®] TWISTER[™] XL 3

SINGLE MICROTEC NOZZLE		
32 SECONDS FORMULATION		
ORIFICE NUMBER	FLOW RATE	
	OZ./MIN	ML/MIN
19	1.5	45
28	3.3	100
38	5.3	160
NONE	17.0	500
70 SECONDS FORMULATION		
19	1.23	37
88 SECONDS FORMULATION		
19	1.3	38

DOUBLE MICROTEC NOZZLE(*)		
32 SECONDS FORMULATION		
ORIFICE NUMBER	FLOW RATE	
	OZ./MIN	ML/MIN
54	12	360
NONE	19.0	570

NOTE: THE FLOW RATES SHOWN HIGHLIGHTED WILL PRODUCE DROPLETS OF 20 MICRONS (MMD) OR LESS (ULV).

(*) OPTIONAL TWO NOZZLES VERSION

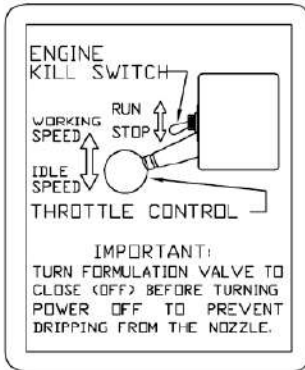
USING FORMULATIONS WITH HIGHER VISCOSITY THAN 32 SECONDS WILL REDUCE THE FLOW RATE BY APPROXIMATELY 20% OR MORE.

WARNING: ALWAYS APPLY FORMULATIONS IN ACCORDANCE WITH THE MANUFACTURER'S RECOMMENDATIONS.



P/N 39567
SPRAY ON/OFF

P/N 39708, FLOW RATE



P/N 39707
THROTTLE CONTROL
OPTIONAL

STARTING INSTRUCTIONS

READ AND UNDERSTAND OPERATION MANUAL BEFORE ATTEMPTING TO OPERATE MACHINE.

1. SET THROTTLE LEVER TO IDLE SPEED.
2. SET IGNITION SWITCH TO ON POSITION.
3. DEPRESS PRIMING BULB SEVERAL TIMES TO PURGE AIR IN CARBURETOR, UNTIL THE FUEL FLOWS THROUGH RETURN PIPE.
4. PULL CHOKE LEVER UPWARD TO CHOKE POSITION (CLOSED).
5. PULL RECOIL STARTER BRISKLY, TAKING CARE TO KEEP THE HANDLE IN YOUR GRASP AND NOT ALLOWING IT TO SNAP BACK.
6. WHEN YOU HEAR THE ENGINE WANT TO START, RETURN THE CHOKE LEVER TO RUN POSITION (OPEN). THEN PULL RECOIL STARTER BRISKLY AGAIN.

NOTE: IF ENGINE DOES NOT START, REPEAT PROCEDURES 4 TO 6.
7. AFTER STARTING, ALLOW THE ENGINE TO WARM-UP 2-3 MINUTES (AT IDLE SPEED) BEFORE OPERATING AT HIGHER SPEEDS.

OPERATOR SAFETY

KEEP ALL LOOSE ITEMS (I.E. CLOTHING, HAIR, JEWELRY, ETC.) AWAY FROM ALL MOVING PARTS.

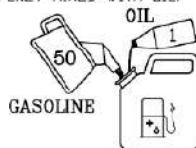
MANY OF THE FORMULATIONS WHICH CAN BE DISPENSED WITH THIS MACHINE ARE HIGHLY TOXIC AND REQUIRE SPECIAL SAFETY EQUIPMENT. READ AND OBSERVE THE FORMULATION LABEL SAFETY PRECAUTIONS, WARNINGS AND PROCEDURES BEFORE OPERATING MACHINE.

ALWAYS WEAR HEARING PROTECTION.

P/N 39706, STARTING INSTRUCTIONS

WARNING

THE TWISTER XL IS EQUIPPED WITH A TWO-STROKE ENGINE. ALWAYS RUN THE ENGINE ON GASOLINE WHICH IS PROPERLY MIXED WITH OIL.



USE UNLEADED GASOLINE WITH AN 89 OCTANES OR HIGHER RATING. USE A QUALITY TWO-CYCLE OIL AT MIXING RATIO OF 50:1. NEVER USE FOUR-STROKE MOTOR OIL. ALWAYS MIX GASOLINE AND OIL IN A SEPARATE CLEAN CONTAINER. MIX THE GASOLINE THOROUGHLY BEFORE FILLING THE ENGINE FUEL TANK.

WARNING

DO NOT OPERATE MACHINE WITH THIS COVER REMOVED

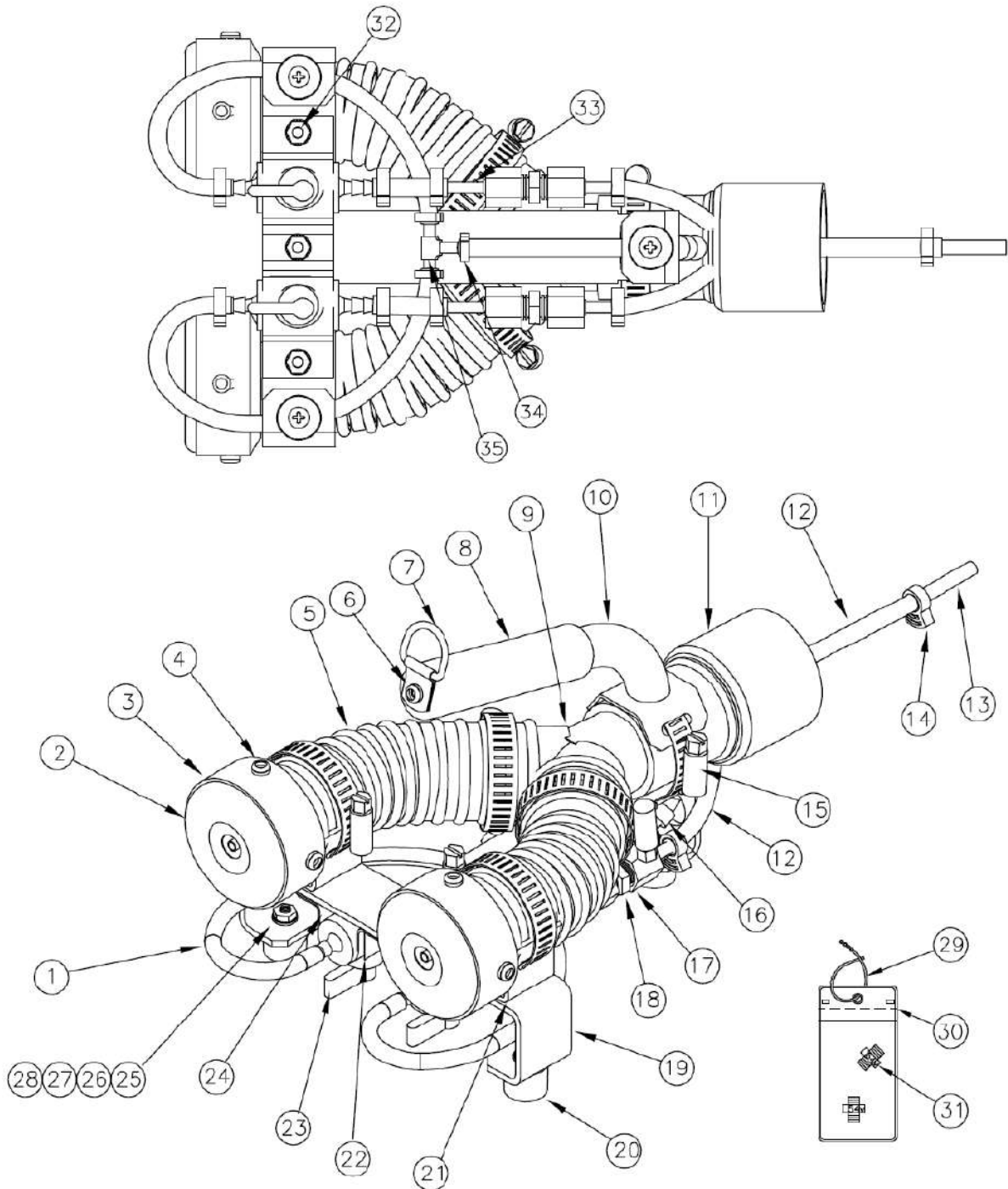
P/N 22325, WARNING

LABELS, TWISTER[™] XL 3

P/N 39709, GASOLINE/OIL
TANAKA PF-4000 ENGINE ONLY

TWISTER XL-3 DUAL NOZZLE ATTACHMENT

P/N: 39716



**TWISTER XL-3 DUAL NOZZLE ATTACHMENT
P/N: 39716**

ITEM	QTY	PART NO.	DESCRIPTION
1	2	80447-4	TUBE, VINYL, .312 GRES
2	2	62313	NOZZLE AY.
3	2	63503-29	ADAPTOR, NOZZLE/HOSE
4	8	62163	SCREW, 8-32X3/8 TAP
5	2	62299-6	HOSE, 1.5 I.D., FLEX
6	1	449623	SCREW, 10-24X1/2 TAP
7	1	11719	CLAMP CARRY STRAP
8	1	59962-1	GRIP, HANDLE, MODIFIED
9	1	39713	"Y" AY. (CLEAR ANODIZE)
10	1	62200	HANDLE AY., TUBE, BLK ANODIZE
11	1	39513-22	CUFF, SWIVEL (MOD.) 3 HOLES
12	3	80447-14	TUBE, VINYL, .312 GRES
13	5	62584-29	TUBING, 1/4 O.D. POLY
14	6	21158	CLAMP, 3/8, PLASTIC
15	5	20054-2	CLAMP, WORM DRIVE, 1.5
16	1	63414-4	HARNESS WRAP
17	4	62582-1	NUT, .250, PLASTIC GRIP
18	2	62553-1	CONNECTOR, UNION, 1/4T
19	1	39717	"T" FRAME AY. (CLEAR ANODIZE)
20	3	58284	FOOT RUBBER
21	2	39529-19	BRACKET, NOZZLE
22	2	39567	LABEL, SPRAY (ON/OFF)
23	2	39560	VALVE, SHUT-OFF (BARB)
24	2	63240-3	BRACKET, SHUT-OFF VALVE
25	3	159929	SCREW, 10-24X5/8, PNCR
26	8	120391	WASHER, FLAT, #10, REG.
27	8	138479	WASHER, LOCK, 10, EXTO
28	8	120361	NUT, 10-24, HEX
29	1	22321-2	TIE, NYLON 5"
30	1	22321-1	ENVELOPE, PLASTIC
31	2	64934-55	ORIFICE AY.
32	5	159920	SCREW, 10-24 X 1/2 PH
33	2	80447-35	TUBING, .312 GRES.
34	3	21158-1	CLAMP, 5/16, PLASTIC
35	1	86190	UNION TEE (1/4 TU)

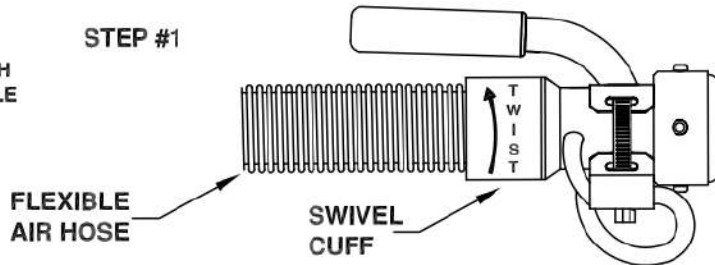
NOT SHOWN

2	62495	GASKET, .31 THK. X .38WD
2	80296-11	CLAMP, HOSE, DOUBLE WIRE
1	39704	ORIFICE KIT

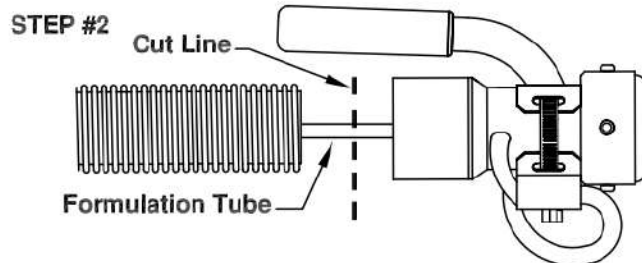
INSTALLATION INSTRUCTIONS FOR DUAL NOZZLE (OPTIONAL)

REMOVING SINGLE NOZZLE

IF YOUR MACHINE WAS PURCHASED WITH A SINGLE NOZZLE, AND THE DUAL NOZZLE ATTACHMENT WAS ORDERED LATER, PROCEED AS SHOWN TO INSTALL THE DUAL NOZZLE

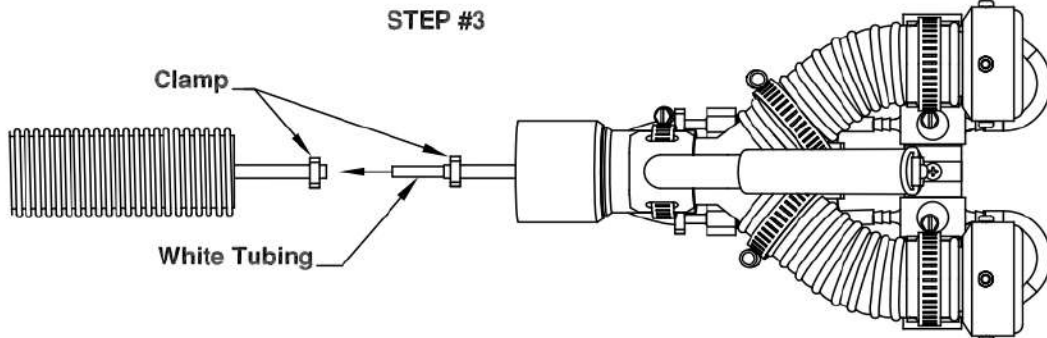


Grip flexible hose and twist swivel cuff to loosen.
Remember that the joint is left hand thread.

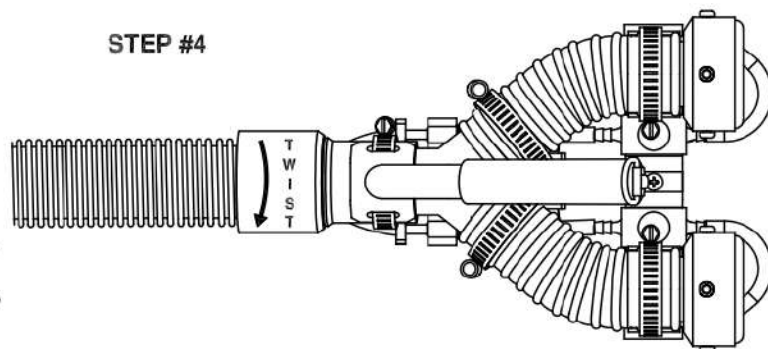


When loose, separate hose from swivel cuff and cut formulation tube.

INSTALLING DUAL NOZZLE

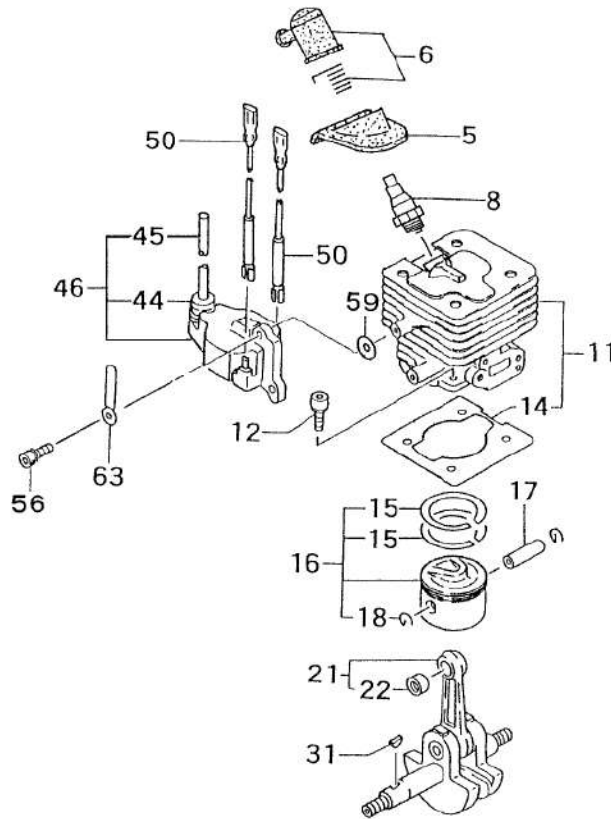


Insert white tubing into formulation tube and apply clamp provided.

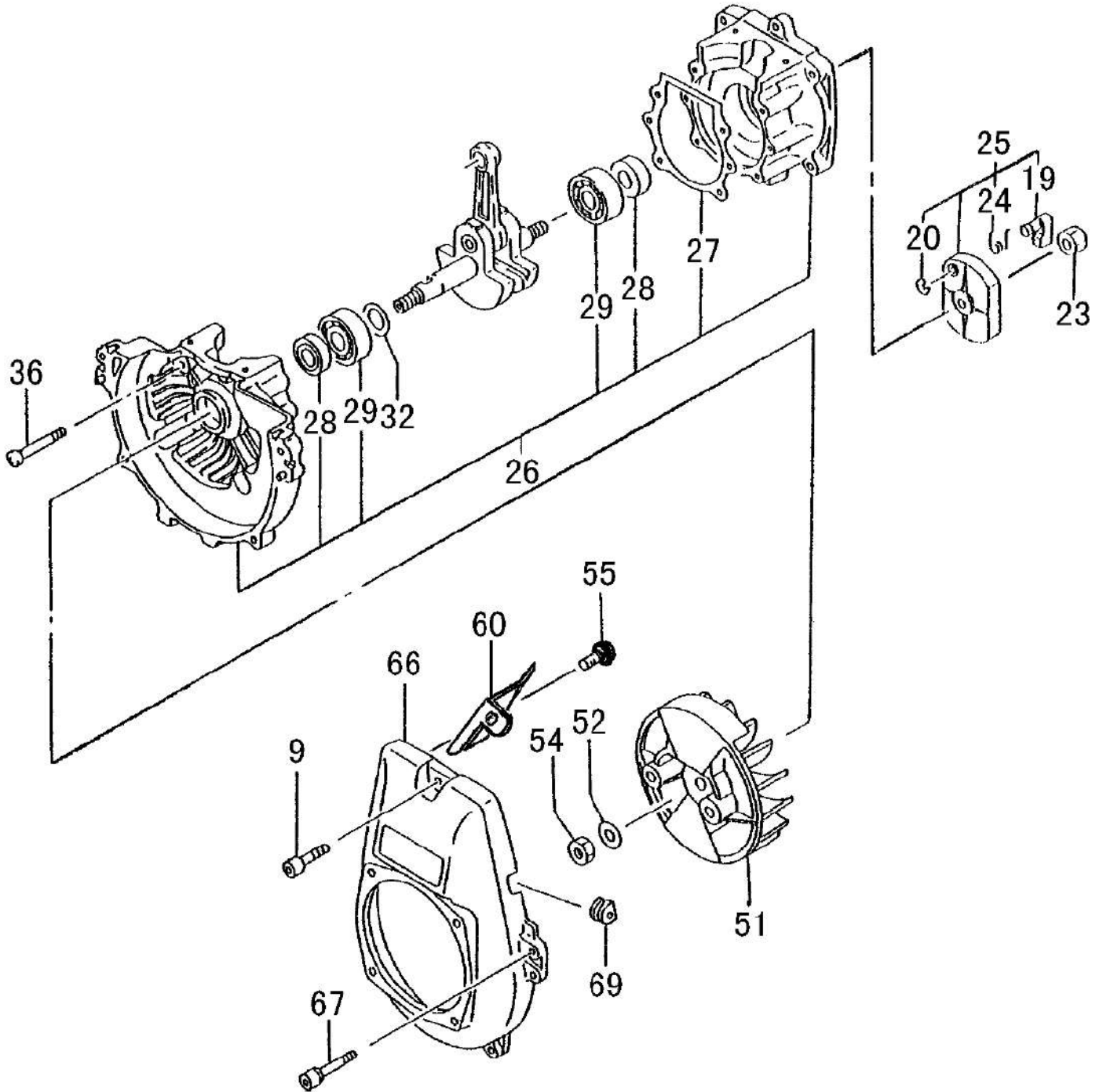


IF REQUIRED, ADJUST THE ENGINE SPEED AS INDICATED IN THE SECTION "SPEED ADJUSTMENT". USUALLY 500 TO 700 RPM HIGHER RPM IS REQUIRED FOR THE DUAL NOZZLE.

Grip flexible hose and twist swivel cuff to tighten.



ITEM	PART NUMBER	DESCRIPTION	QTY	COMMENTS
1-5	25504200200	COVER, SPARK PLUG, RUBBER	1	
1-6	15711666900	CAP, SPARK PLUG ASS'Y	1	
1-8	01804075200	PLUG, SPARK	1	
1-11	0010440590	SET, CYLINDER	1	
1-12	99461050204	BOLT, HEX, HOLE, 5X20, S	4	
1-14	0170440020	GASKET, CYLINDER	1	
1-15	04104050200	RING, PISTON	2	
1-16	0300440090	SET, PISTON	1	
1-17	0370100020	PIN, PISTON	1	
1-18	03905004200	CIRCLIP, PISTON PIN	2	
1-21	0460440080	CRANKSHAFT	1	
1-22	99962101004	BEARING, NEEDLE, F1010B	1	
1-31	06802000200	KEY, WOODRUFF, 3X13X5	1	
1-44	56020517200	CAP, RUBBER	1	
1-45	1782054320	CORD, HIGH TENSION	1	
1-46	1672054390	ASSY, IGNITION COIL	1	
1-50	1790007080	STOP CORD, 220MM	2	
1-56	99011040182	SCREW, 4X18	2	Before S/N U112140
1-56	99416040183	SCREW 4X18/WS	2	S/N U112141 and after
1-59	1820186A201	WASHER, SPECIAL	2	
1-63	19805015800	CLAMP, CORD	1	



CRANKCASE, FLYWHEEL, STARTER PULLEY • FIGURE 2

ITEM	PART NUMBER	DESCRIPTION	QTY	COMMENTS
2-9	99463050204	BOLT, HEX 5X20	1	
2-19	7880162V20	PAWL,STARTER	1	
2-20	99355050000	RING,STOP,5	1	
2-23	99111100013	NUT,10	1	
2-24	7900162V200	SPRING,PAWL,STARTER	1	
2-25	7980422090	PAWL,STARTER ASSY	1	
2-26	0720440090	CASE,CRANK	1	Before S/N U207704
2-26	0720440091	CASE,CRANK	1	S/N U207705 and after
2-27	0900440020	GASKET,CRANKCASE	1	*Crankcase assy includes bearings, seals and gaskets.
2-28	99966152511	SEAL,OIL,#VE15X25X7	2	
2-29	99961620200	BEARING,BALL,#6202	2	
2-32	07102007200	SHIM,15.2X20X.05	V	*Shims are "as needed" to obtain
2-32	07102007210	SHIM,15.2X20X.10	V	correct side clearance
2-32	07102007220	SHIM,15.2X20X.15	V	
2-32	07111600230	SHIM,16X21X.20	V	
2-32	07111600240	SHIM,16X21X.30	V	
2-36	99461050304	BOLT,HEX,5X30S	4	
2-51	1552053880	ROTOR,MAGNETO	1	
2-52	99201100011	WASHER,10	1	
2-54	99101100011	NUT,10	1	
2-55	99414050101	SCREW,S,5X10	1	
2-60	1320440020	DEFLECTOR,AIR	1	
2-66	1120440021	CASE,FAN (ORANGE)	1	
2-66	1120441321	CASE,FAN (POLISHED)	1	
2-67	99461050204	BOLT,HEX,HOLE,5X20,S	4	
2-69	20311660200	GROMMET,PRIMARY CORD	1	