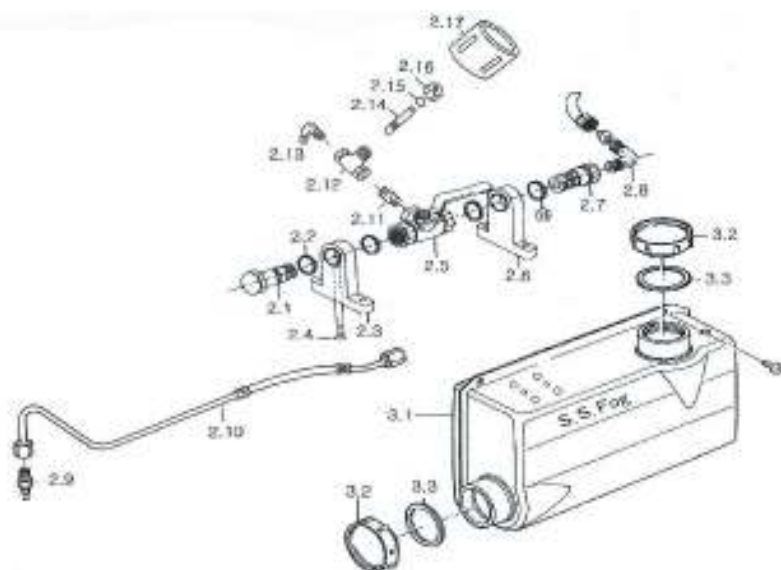
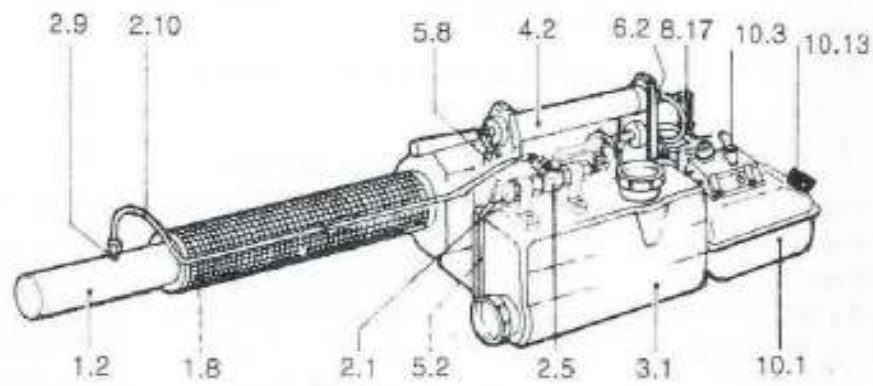
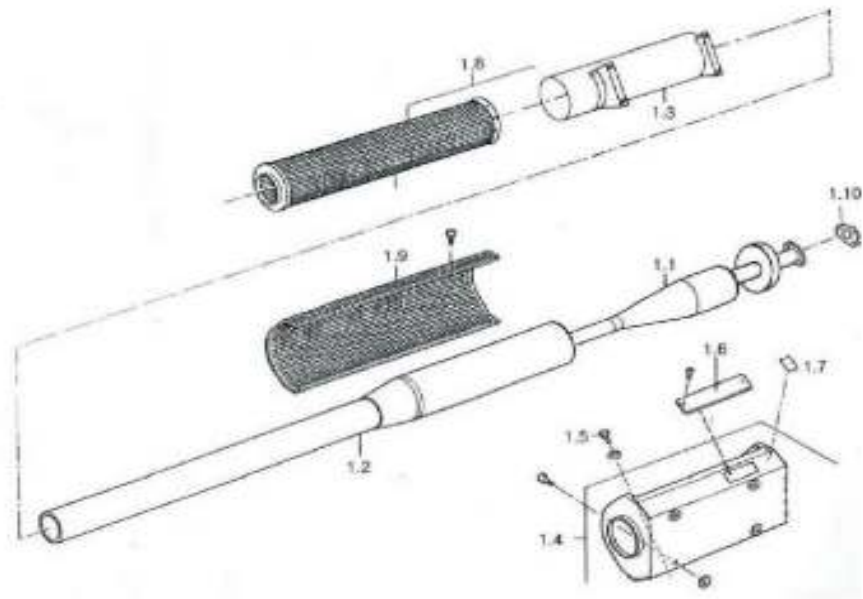


FOGGERS S S FOG 150

Fogging Machine

Spare Parts Diagram



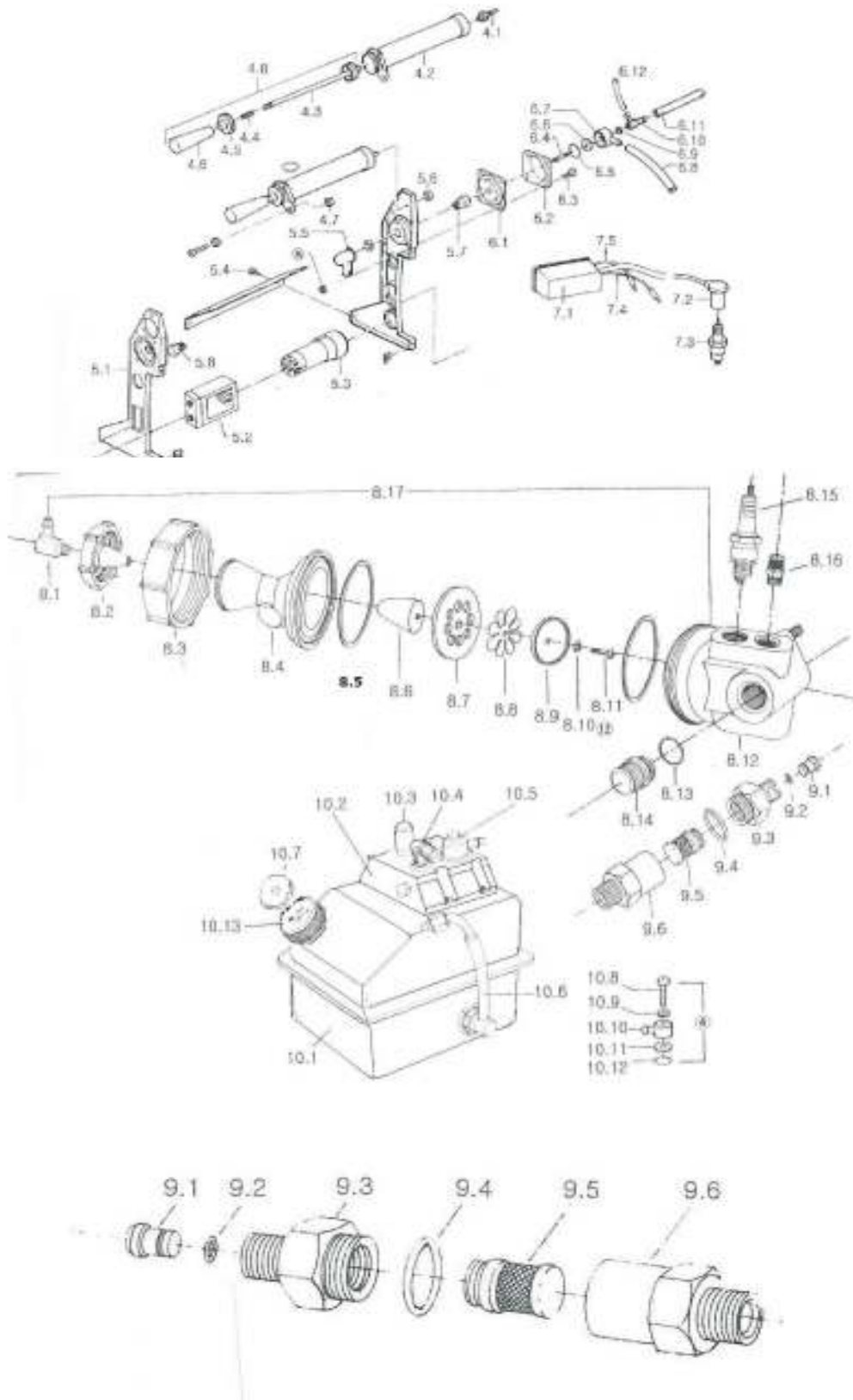
FOGGERS S.S. FOG 150 PART LIST

Dia No	Code	Part Description
1.1	SPAF-000600-100101	100101 Resonator (Fogging Tube 1.1)
1.10	SPAF-000600-100110	100110 Gasket (Fogging Tube 1.10)
1.2	SPAF-000600-100102	100102 1st Air Cooling Tube (Fogging Tube 1.2)
1.3	SPAF-000600-100103	100103 2nd Air Cooling Tube (Fogging Tube 1.2)
1.8	SPAF-000600-100108	100108 Safety Net (Fogging Tube 1.8)
1.9	SPAF-000600-100109	100109 Protection Net (Fogging Tube 1.9)
2.00	SPAF-000600-ASUVA	100200 Auto Set Up Valve AY.
2.1	SPAF-000600-100201	100201 Drug Filter (Drug Flow 2.1)
2.10	SPAF-000600-100210	100210 Drug Pipe (Drug Flow 2.10)
2.11	SPAF-000600-100201-211	100201-100211 Drug Flow Assy. (Drug Flow XL2)
2.12	SPAF-000600-100212	100212 Dial Valve Body (Drug Flow 2.12)
2.15	SPAF-000600-100215	100215 Hose Carburetor O Ring (Drug Flow 2.1)
2.17	SPAF-000600-100217	100217 Drug Dial (Drug Flow 2.17)
2.2	SPAF-000600-100202	100202 Sealing (Drug Flow 2.2)
2.3	SPAF-000600-100203	100203 Drug Inhale Body (Drug Flow 2.3)
2.4	SPAF-000600-100204	100204 O Ring (Drug Flow 2.4)
2.5	SPAF-000600-100205	100205 Drug Valve (Drug Flow 2.5)
2.6	SPAF-000600-100206	100206 Air Inhale Body (Drug Flow 2.6)
2.7	SPAF-000600-100207	100207 Nipple (Drug Flow 2.7)
2.8	SPAF-000600-100208	100208 Air Inlet Nipple Joint (Drug Flow 2.8)
2.9	SPAF-000600-100209	100209 Drug Nozzle (Drug Flow 2.9)
3.2	SPAF-000600-100302	100302 Drug Tank Cap (Drug Tank 3.2)
3.3	SPAF-000600-100303	100303 Drug Tank Gasket (Drug Tank 3.3)
4.1	SPAF-000600-100401	100401 Pump Nipple
4.2	SPAF-000600-100402	100402 Cylinder
4.3	SPAF-000600-100403	100403 Piston
4.4	SPAF-000600-100404	100404 Spring
4.5	SPAF-000600-100405	100405 Cylinder Cover
4.6	SPAF-000600-100406	100406 Grip handle
4.7	SPAF-000600-100407	100407 Nut
4.8	SPAF-000600-100402-408	100402-408 Cylinder Piston Aggregate (Pump 4)
5.1	SPAF-000600-100501	100501 Device Body
5.2	SPAF-000600-100502	100502 Battery (Frame 5.2)
5.3	SPAF-000600-100503	100503 Air Compressor (Frame 5.3)
5.4	SPAF-000600-100504	100504 Nut
5.5	SPAF-000600-100505	100505 Rubber Cover (Frame 5.5)
5.6	SPAF-000600-100506	100506 Nut (Frame 5.6)
5.7	SPAF-000600-100507	100507 Ignition Switch (Frame 5.7)
5.8	SPAF-000600-100508	100508 Start Button (Frame 5.8)
6.1	SPAF-000600-100601	100601 Diaphragm (Pressure Room 6.1)
6.10	SPAF-000600-100610	100610 Hose Nipple
6.11	SPAF-000600-100611	100611 Hose (Pressure Room 6.11)
6.12	SPAF-000600-100612	100612 Hose
6.2	SPAF-000600-100602	100602 Room Cover (Pressure Room 6.2)
6.3	SPAF-000600-100603	100603 Bolt SS
6.4	SPAF-000600-100604	100604 Connection Pipe
6.5	SPAF-000600-100605	100605 O Ring (Pressure Room 6.5)
6.6	SPAF-000600-100606	100606 Passing Valve (Pressure Room 6.6)
6.7	SPAF-000600-100607	100607 Valve Cover (Pressure Room 6.7)
6.8	SPAF-000600-100608	100608 Hose (Hose 6.8)
6.9	SPAF-000600-100609	100609 Gaskets
7.1	SPAF-000600-100701	100701 Ignition Coil (Ignition 7.1)
7.2	SPAF-000600-100702	100702 Ignition Plug Cap (Ignition 7.2)
7.3	SPAF-000600-100703	100703 Ignition Plug (Ignition 7.3)
7.4	SPAF-000600-100704	100704 (+) Line- Red
7.5	SPAF-000600-100705	100705 (-) Line -Green
8.1	SPAF-000600-100801	100801 Nipple (Nipple 8.1)
8.10	SPAF-000600-100810	100810 Washer (Carburetor 8.10)
8.11	SPAF-000600-100811	100811 Bolt (Carburetor 8.11)
8.12	SPAF-000600-100812	100812 Lower Carburetor (Carburetor 8.12)

FOGGERS S S FOG 150

Fogging Machine

Spare Parts Diagram



[illegible]